



## Workshop on Space Plan services (AP30/30A/30B)

Presented by

*ITU-R/SSD Space Notification  
and Plans division*

## Workshop on Space Plan services (AP30/30A/30B)

### Objectives of the workshop:

- Deepen the technical & regulatory knowledge about procedures in AP30/30A/30B
- How to use BR tools (Version 7) to:
  - Submit notices / comments
  - Get BR examination's results
  - Perform examinations
- **New!** Use of GIBC/AP30B including Reporting tool, GIBC/PFD for AP30/30A/30B

## Workshop on Space Plan services (AP30/30A/30B)

### Today's Program in the morning

Time	Subject	Description
09:00- 09:10	<b>Introduction</b>	
09:10-09:30	<b>AP30/30A regulation</b>	Introduction and regulatory aspect
09:30-10:05	<b>AP30/30A exercise on submission</b>	Exercise on validation of a sample with a correction of few often wrongly submitted parameters using SpaceCap and cross check with GIMS data
10:05-10:25	Coffee break	
10:25-10:45	<b>AP30/30A technical examination</b>	Technical examination introduction (list of specific concepts, list of examination...)
10:45-11:05	<b>AP30/30A exercise on SPS_REPORTs</b>	Exercise on viewing results of MSPACE available in BR IFICs
11:05-11:25	<b>AP30B regulation</b>	Introduction and regulatory aspect
11:25-12:10	<b>AP30B exercise on submission</b>	Exercise on validation of a sample with a correction of few often wrongly submitted parameters using SpaceCap and cross check with GIMS data
12:10-13:30	<i>Lunch break</i>	

## Workshop on Space Plan services (AP30/30A/30B)

### Today's Program in the afternoon

Time	Subject	Description
12:10-13:30	<i>Lunch break</i>	
13:30-14:10	<b>AP30B exercise on technical examination</b>	Exercise on technical examination (GIBC/ANX3, Art.21,ANX4)
14:10-14:40	<b>AP30B exercise to analyze results of GIBC</b>	Exercise on viewing results available in BR IFICs using Reporting tool
14:40-14:55	<b>AP30/30A/30B Comments on Special Sections</b>	Description of all means to find if administrations are identified and to make comments
14:55-15:35	<b>AP30/30A SpaceCom</b>	Exercise to comment on AP30(30A)/E Part A published in a BR IFIC
15:35-15:55	Coffee break	
15:55-16:10	<b>AP30/30A/30B information on Web and in BR IFIC</b>	Getting information on the ITU/BR/WEB and in the BR IFIC DVD (SNL-on-line, SNS-on-line, Space Plan databases..)
16:10-16:25	<b>AP30/30A/30B when BR IFIC is issued</b>	What to do on issue of a BR IFIC?
16:25-16:40	<b>AP30/30A/30B Exercise on RES49</b>	Exercise to create a Res 49 filing with SNS online
16:40-17:00	<b>Q&amp;A</b>	

# Satellite project: from Radio Spectrum to MIFR

**Operator requirements**  
(type of space service, freq. band, station type, ITU Region...)

Selecting the appropriate band in the Radio Spectrum

Selecting the appropriate PLAN / regulatory procedure

Submitting to ITU satellite network characteristics

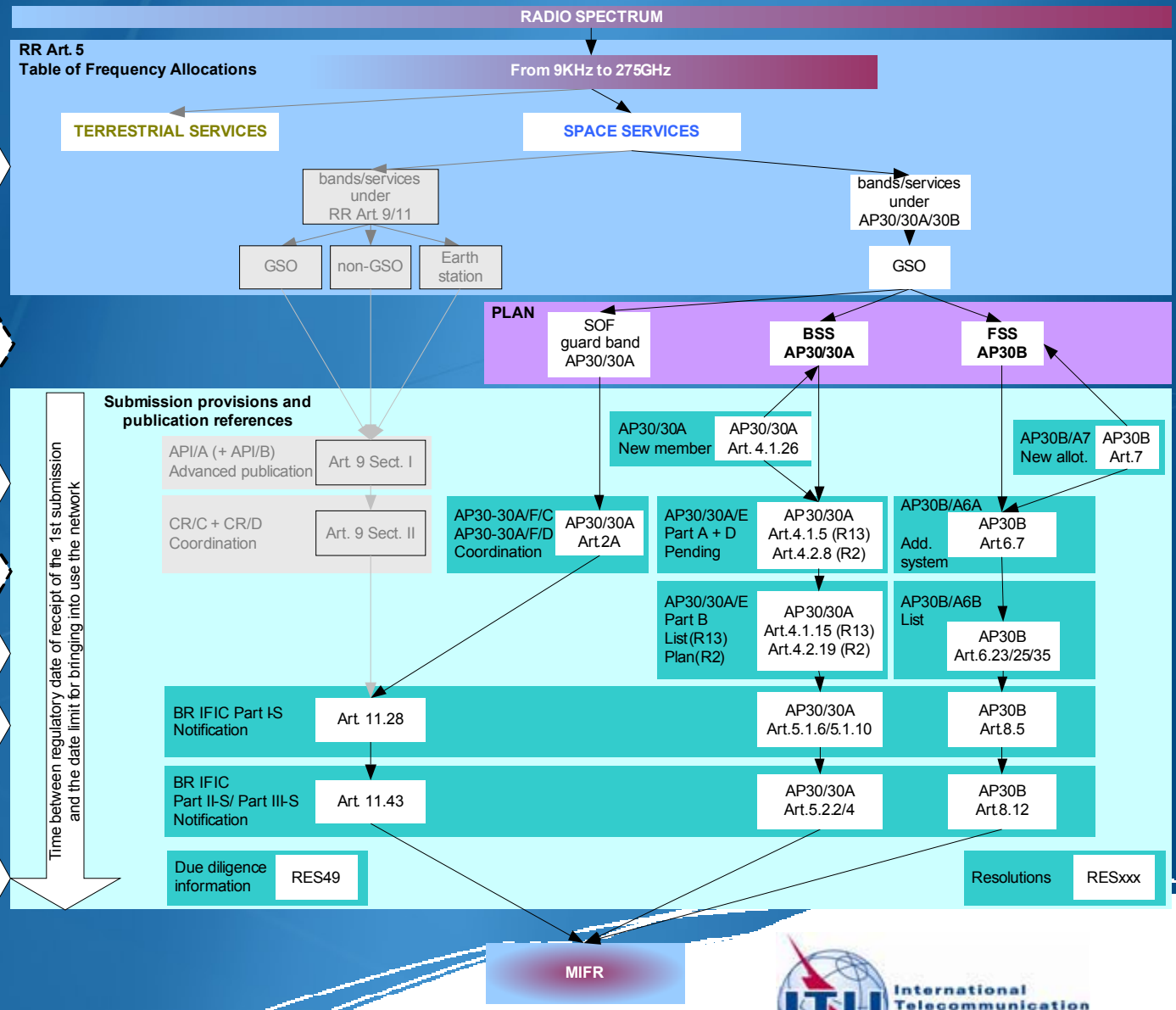
Seeking agreements with affected/affecting Administration *Assistance*

Submitting to ITU agreements and final characteristics

Submitting to ITU notification for recording assignments in MIFR

Submitting to ITU date of bringing into use confirmation and due diligence

**Internationally recognised Operating space network**



# Which software can be used?

Preparation of a submission

- SpaceCap
- SpaceVal/(SpacePub)

Analyses of Publications

- SpaceQry/SNS-Online/SNL-Online
- GIBC / SPS including reporting tool
- GIMS

Making comments on publications

- SpaceCom

Coordination with administrations

- SpaceQry/SNS-Online/SNL-Online
- GIBC / SPS including reporting tool
- GIMS

## Workshop on Space Plan services (AP30/30A/30B)



Main contact person for Space Plan Services:

[Mitsuhiro.Sakamoto@itu.int](mailto:Mitsuhiro.Sakamoto@itu.int)